

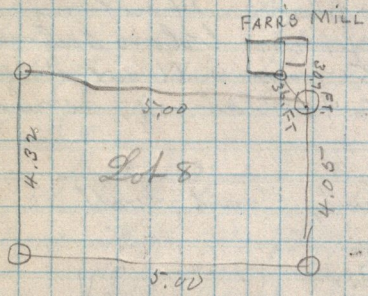
77

May 15 - 1884

Notice on Block 32 - Plat
Iron harrow tooth post on
4th St 7 feet west and 40.25 ft
South from the S.W. cor. of lot 1
in said Block.

2380
40.25
119.0
952
9639.0

Survey of part of
lot 8 Block 7 66 - Plat C



36 ft S.E. from
Adobe Mill (S.E. cor) and 30.7 ft S.E.
from Cor. of frame drainage to
N.E. cor. of lot 8 - 1